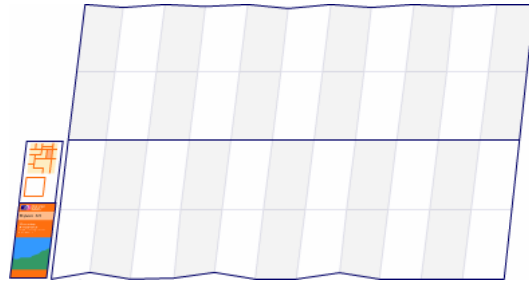


## Folding A Map

*All large maps fold in the same way and you will find that the creases in them will help you. You will also find folding easier to do on a flat surface.*

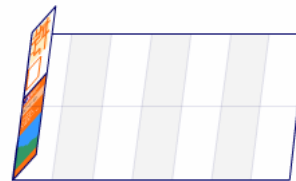
### Step 1

*Start with your map completely unfolded with the shiny cover face up in the bottom left hand corner.*



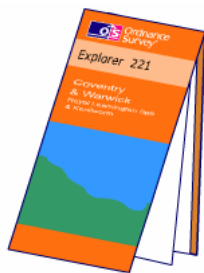
### Step 2

*Now fold the map in half by bringing the top edge to meet the bottom edge.*



### Step 3

*Next start folding from the cover along the crease lines, making sure the shiny cover can be seen all the time.*



### Step 4

*Finally, fold in half so that the shiny covers are on the outside. It's as simple as that!*